



4-H NEWSLETTER

Happy September! We have a few deadlines this month:

- Ambassador applications are due Monday, September 2nd at midnight.
- Record books and pin applications are due September 20th at 4:00pm.

We have lots of information in this newsletter about the 2024-2025 4-H program year that begins in October. There are exciting things coming! Check out the Year in a Glance Calendar for upcoming dates.

Start telling your friends about 4-H and encourage them to enroll October 1!

What's In This Month's Issue?

- 23-24 Wrap Up
- 4-H Ambassador Apps
- Record Books
- New 4-H Year
- Chill with 4-H
- Cloverbuds Flyers
- Upcoming & Club Corner
- Calendars

Contact Us

Meade County Extension Office:

Address: 407 E Rainbelt
PO Box 369
Meade, KS 67864
Phone: (620) 873-8790

Hannah: hannaheakes@ksu.edu
(620) 629-5972

Wadona: wlhenson@ksu.edu
(620) 518-6653

Leslie: lesliedenise@ksu.edu

Website

www.meade.ksu.edu

Social Media

Facebook:/MeadeCoExtension



2023-2024 WRAP UP

Thank you notes

If you haven't thanked county fair prize sponsors or cake/pie auction supporters, you should do so soon. Livestock buyer information should be released to you soon and those thank you notes need to be sent quickly.

Not sure who to thank, ask the office, we can help.



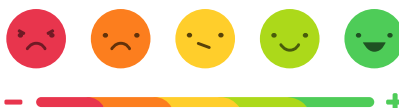
State Fair Entries

If you are sending an entry with Wadona Henson to the state Fair, those need to be to the extension office no later than Wednesday, September 4. You should have received an email with instructions, but you can call the office if you have questions.

End of Year Survey

4-H Parents, volunteers, and 4-H youth, would you please fill out this end of year survey? This survey is strictly to help us spark new ideas and work to improve our 4-H program. Your input matters!

<https://bit.ly/3MazJMN>



4-H AMBASSADORS

What is a 4-H Ambassador?

4-H Ambassadors are a team of 14-18 year old 4-Hers who work to promote 4-H in the county. The 4-H Ambassador team is lead by the advisor, Dixie Harlow, and the Extension Agents. To be a 4-H Ambassador, you must be enthusiastic about 4-H, have a passion for spreading the program in our county, and willing to participate and be part of a team.

Commitment: Average of 4-8 hours per month, including monthly meetings to plan activities.

How to become an ambassador: Apply below by September 2nd. Ambassadors will be selected shortly after the deadline.

Application

DUE SEPTEMBER 2ND AT 5PM

Apply here: <https://forms.gle/HFcwF8NtGPAKYDoR9>

Please start early, take your time, and put some thought into your answers. We are looking for youth who are really going to make a difference in our 4-H program!





RECORD BOOKS & PIN APPLICATIONS

Due Date: September 20th at 4:00 PM

Kansas 4-H recognizes 4-H members' achievements each year through Membership Achievement Pins and Project Records.

Kansas 4-H Member Achievement pins are designed to recognize 4-H members as they reach milestones throughout their 4-H journey. The pins are awarded in a series. As a member's 4-H journey progresses, the achievement pin requirements expand to challenge individuals to explore and engage in more opportunities to develop life skills.

Kansas 4-H Project Recognition awards youth for completing a record book in a project area. Project records are a summarization of a given year's 4-H work within a certain project. 4-H members assemble their project report into a specified document and submit those for evaluation. The top half of record books in each project are awarded with a project pin. Meade County also currently offers a non-competitive record book option. The purpose of non-competitive books is to encourage all Meade County 4-Hers to participate in some form of record keeping. However, the competitive record book option is what we strongly recommend.

Membership Achievement Pin Applications and Record Books are due September 20th at 4:00pm. Both must be signed by the parent, 4-H member, and your Club Leader prior to turning them in to the office. Information for both Member Achievement Pin Applications and Project Records can be found at: <https://www.kansas4-h.org/resources/awards-and-recognition/index.html>.

Record book options:

- **Non-competitive**
 - Not judged, no project pins received
 - Receive \$25 credit from 4-H Council towards local or state 4-H events
 - **For a non-competitive record book you need:**
 - Personal Information Page
 - 4-H Story (general, 2 page maximum)
 - Permanent Record
- **Competitive**
 - Taken to another county to be judged
 - Receive \$25 for one or \$50 credit for 2 or more from 4-H Council to use towards local or state 4-H events
 - Top half scores in each project will receive awards (project pins)
 - **For a competitive record book you need:**
 - Record Book Check Sheet
 - Personal Information Page
 - Project Record Report Form (One for each project you are completing a record book for; either general or animal for livestock projects for the correct age division)
 - Permanent Record (Keep year to year and continue adding to it.)

Membership Achievement Pins:

Pins are awarded in the following order:

Membership
Bronze
Clover
Emerald
Silver

Silver Guard
Leadership
Gold

Gold Guard

Achievement Plans and pin applications can be found here:

<https://www.kansas4-h.org/resources/awards-and-recognition/index.html>



NEW 4-H YEAR

4-H Online

The new 4-H year starts October 1st, 2024! This is when you can re-enroll in 4-H Online for the 2024-2025 4-H program year. 4-H Online will be shut down for maintenance from September 20th-30th. When you enroll starting October 1st, make sure to select the “Pay by check” option so that we can apply our coupon code to cover your \$15 enrollment fee.

NATIONAL 4-H WEEK!

OCTOBER 6-12TH

Celebrate National 4-H Week with us and spread the word about 4-H!

Selfie Sunday: Share a selfie with your favorite 4-H project

Monday Motivation: Wear a motivational t-shirt

Tuesday Trivia: Share or engage with our 4-H trivia post on Facebook

Wednesday 4-H Spirit Day: Wear a 4-H T-Shirt to school

Throwback Thursday: Share an old picture of you in 4-H

Friday Night Lights: Share or engage with our post on Facebook highlighting 4-H Alumni



NATIONAL 4-H WEEK



4-H PROUD, 4-H GROWN!



NEW 4-H YEAR

October 13th

4-H Sunday

Every year we have 4-H Sunday during national 4-H week, where we attend church together as a 4-H group. This is open to any 4-H family who would like to attend. This year, 4-H Council voted to attend Meade First Baptist Church. Service is at 11am. Join us if you'd like!

4-H Council Meeting

The next 4-H Council meeting will be at 4pm on October 13th in B Building at the Fairgrounds.

“Chill with 4-H” Open House & Enrollment Night

We are hosting an open house for the anyone interested in 4-H to come eat supper, check out 4-H projects, meet our club leaders, and enroll in 4-H if they want to...**AND WE NEED YOUR HELP!** This is our 48 Hours of 4-H Service Project. We are requesting everyone attending to bring a non-perishable food item or free will donation for the food bank. **We are also asking YOU, our 4-Hers, to serve the community the chili meal and bring your 4-H projects to display.** Please see the flyer on the next page for the full information. If your family is able to attend, please go ahead and register at the link on the flyer. If you are willing to bring some of your projects to display, sign up here by Oct 4th so we can get an idea of what we will have to display:

<https://www.signupgenius.com/go/10C084EABAB29A0F9C52-51019738-4hopen>





Chill

WITH
4-H

SUNDAY, OCTOBER 13
5:00-7:00PM
B BUILDING AT THE FAIRGROUNDS



JOIN US FOR AN OPEN HOUSE
AND ENROLLMENT NIGHT!

Come eat chili, explore the 4-H projects, learn about our 4 clubs in the county, and even have the opportunity to enroll in 4-H.

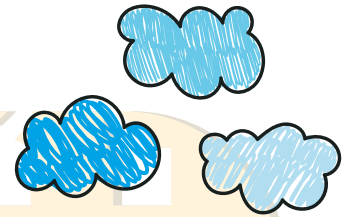
PLEASE BRING A NON-PERISHABLE FOOD ITEM OR FREE WILL DONATION

Registration requested but not required:

https://kstate.qualtrics.com/jfe/form/SV_a4wzCMRBGQcUjaK

For more information:

Meade County Extension
620-873-8790



K-STATE
Research and Extension



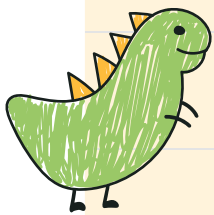
Meade County 4-H



CLOVERBUDS



Cloverbuds is an introduction to 4-H for youth ages 5 and 6. Cloverbuds will meet monthly throughout the school year. Youth will have the option to attend in Plains or Meade. See the reverse side for dates.

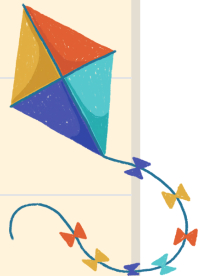


- Fun
- Activity Focused
- Non-competitive
- Group-centered learning
- Leader directed
- Positive
- Success oriented

ENROLL:

v2.4honline.com

Opens October 1st

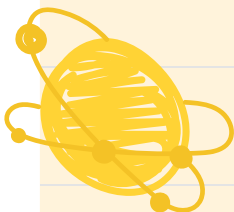


MORE INFO:

Meade County Extension

620-873-8790

<https://www.kansas4-h.org/enrollment.html>





K-STATE
Research and Extension



Meade County 4-H

CLOVERBUDS

3:40pm-4:40pm

PLAINS

November 5
December 10
January 7
February 4
March 4
April 8

MEADE

November 12
December 17
January 14
February 11
March 11
April 15

MORE INFO

Meade County Extension
620-873-8790

<https://www.kansas4-h.org/enrollment.html>

UPCOMING

Kansas Youth Leadership Forum

When: November 23-24, 2024

Where: Rock Springs 4-H Center

Who: Youth 14-18 years of age before January 1, 2025

2024 Fees will be set in late summer/early fall

2023 Fees: \$210 and additional optional \$50 for Friday overnight and breakfast.

Registration Deadline:

Registration coming soon! Check the Kansas 4-H Website: <https://www.kansas4-h.org/events-activities/conferences-events/kansas-youth-leadership-forum/index.html>

Deadline - Monday October 15, 2024 by 11:59 p.m.

CLUB CORNER



The Four Leaf Clovers club is seeking 2 new club leaders! After many years of service, Vince would like to step down as club leader. He is more than willing to help someone transition into this role this year. If you are interested, or you know someone who is, please contact the office!

Volunteers
needed

SEPTEMBER

Sun	Mon	Tue	Wed	Thu	Fri	Sat
1	Office Closed 4-Leaf Clover Meeting Ambassador App. Due	3 Plains Livewires Meeting	4 State fair entries due	5 Wadona takes entries to State Fair!	6	7
8 3 C's Meeting	9	10	11	12	13	14
15	16	17	18	19	20 Record Books & Pin Applications Due	21 State Archery Match
22	23	24	25 Town and Country Meeting	26	27	28
29	30	31				

MONTHLY CLUB MEETINGS

Club	Date	Time	Location
4-Leaf Clover	2nd	6:30pm	Extension Office
Town and Country	25th	1:30-6:30pm	Fairgrounds, Bldg B
3 C's	8th	3pm	Fowler Grade School
Plains Livewires	3rd	6:30pm	Plains Methodist Church



YEAR IN A GLANCE:

IMPORTANT DATES FOR 2024!

September

2: Ambassador Applications Due

6-15: Kansas State Fair, Hutchinson

20: Record Books and Membership Pin Applications Due

21: State Archery Match, Wakarusa

October

1: New 4-H Year Begins, 4-H Online Enrollment Opens

6-12: National 4-H Week!!

12: State Shotgun Matches

13: 48 Hours of 4-H Event: 4-H Sunday, Chill with 4-H Open House, 4-H Council Meeting

November

2: Officer Training (tentative)

5: Plains Cloverbuds Meeting

12: Meade Cloverbuds Meeting

23-24: Kansas Youth Leadership Forum, Rock Springs 4-H Center

26: Program with Wadona - more info to come!

27-29: Office Closed for Thanksgiving

December

8: Achievement Banquet & Christmasing in Plains

10: Plains Cloverbuds Meeting

17: Meade Cloverbuds Meeting

23-31: Office Closed

January

1-3: Office Closed

7: Plains Cloverbuds

14: Meade Cloverbuds

20: Office Closed

February

4: Plains Cloverbuds

11: Meade Cloverbuds

16-17: Citizenship in Action

March

4: Plains Cloverbuds

11: Meade Cloverbuds

18: YQCA Training

