



## 4-H NEWSLETTER

Join Us!

Welcome Reception  
FOR  
**Wadona Henson**  
Family and Community  
Wellness Extension Agent



**JUNE 27, 2024**  
12:30-3:30PM

Meade County Extension Office  
407 E Rainbelt  
Meade, KS

### What's In This Month's Issue?

- Upcoming Events
- Fair News
- State Fair Info
- Day Camp Flyers
- Calendar
- Year in a Glance

### Contact Us

**Meade County Extension Office:**  
Address: 407 E Rainbelt  
PO Box 369  
Meade, KS 67864  
Phone: (620) 873-8790

**Hannah:** hannaheakes@ksu.edu  
(620) 629-5972

**Wadona:** wlhenson@ksu.edu  
(620) 518-6653

**Leslie:** lesliedenise@ksu.edu

**Website**  
[www.meade.ksu.edu](http://www.meade.ksu.edu)

**Social Media**  
Facebook:/MeadeCoExtension



We are so excited to welcome Wadona to our office! Her first day is June 10th, but her first week in the office will be June 24th-28th. Please join us at her welcome reception or stop by the office another time that week, even if you already know her! Please note, Wadona's Extension cell phone number is a new number (620-518-6653). If you already have her personal number or the previous Extension cell phone saved, make sure to contact her on the new number for Extension business.

# UPCOMING

## Record Book Party

The record book party is at Arena Football in Dodge City on Sunday, June 9th at 2pm. Meet outside at 1:30 so Hannah can purchase tickets! Let Hannah know ahead of time if you need a ride.



DON'T MISS OUT!

## Miller Ranch Scholarship

**DUE: Monday, June 3rd by 5:00pm**

Calling all Meade County 4-H seniors! The Miller Ranch offers a \$500 scholarship to one Meade County 4-H senior each year.

To apply: Write a one page paper answering these questions:

- What do you plan to do after High School and how would the \$500.00 be used?
- As a past 4-H member how will you promote 4-H in the community you call home after graduation?
- How can you promote the Beef industry?

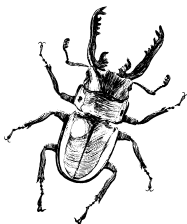


## Meade County Day Camps!



We will be having THREE day camps this summer! All three are for ages 7-12. Youth do not need to be in 4-H to register, so bring your friends! Flyers with more information are in the newsletter and on our Facebook page.

- Fishing Day Camp, June 21, 8am-11am at Meade State Park. Register by June 17 at <https://bit.ly/3wLlhah> or call us.
- Entomology Day Camp, June 25th, 9am-12pm at Meade City Park. Register by June 21 at <https://bit.ly/4e5ly8Q> or call us.
- Meade County Day Camp: July 2nd, 9am-2pm at Meade City Park. Register by June 27 at <https://bit.ly/4bW3VX5> or call us.



# FAIR NEWS

## DUE JULY 15

- Auction Eligibility Forms
- YQCA Certificate
- Livestock Insurance (optional)
- Stall reservations
- FAIR ENTRIES

## Visit our website

All fair documents can be found on our website:  
<https://www.mead.e.k-state.edu/4-h/fair/fair.html>



Make sure to look at the fair schedule in detail!  
Fair entries are open July 1st and are due **MONDAY, July 15th!** Enter anything you think you might want to exhibit at the fair.

## Fair Books are Here!

Fair Books are available at our office and our local banks! Pick yours up or find it on our website.



## Fair Set up & Clean up

Set Up: Saturday, July 20, 5:30pm  
Clean Up: Saturday July 27, 10:00am

Just as last year, there is a scheduled time for setting up and cleaning up the fairgrounds. **Both Fair Set Up and Clean Up are required for 4-Hers in order to get your premium money.** If you are unable to attend either/both events, please make arrangements with the office beforehand. We understand people have other commitments before and after fair, but everyone plays a part!

## AUCTION ELIGIBILITY FORMS: JULY 15

All youth wishing to sell an item in the food or livestock auction must fill out the Auction Eligibility Form and turn it in to the office by July 15th at 4:00pm. Your club leader must sign the form, so don't wait until the last minute! Download the form from our website: [www.meade.k-state.edu/4-h/fair/fair.html](http://www.meade.k-state.edu/4-h/fair/fair.html) or stop by the office.

## Livestock Insurance & Stall Reservations

Livestock insurance can be purchased for animals that are shown at the county fair for \$7/head. If you have animals down but we do not receive payment by July 15th, those animals will not be covered. The insurance covers the animal at market value once it leaves your property until the end of the fair on Friday. Download the form from our website: [www.meade.k-state.edu/4-h/fair/fair.html](http://www.meade.k-state.edu/4-h/fair/fair.html) or come in to the office to grab one!

Stall reservations are completed on this same page.

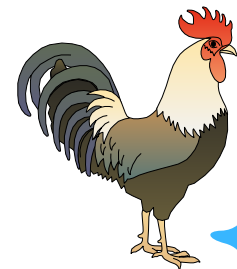
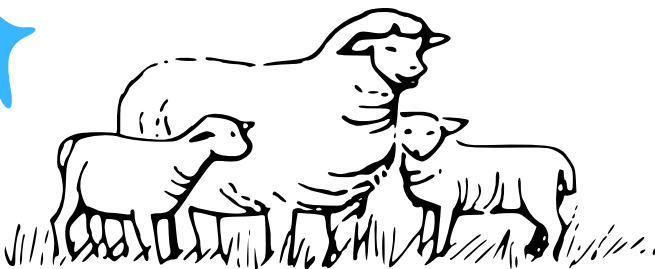
## YQCA

All youth showing livestock (sheep, goats, hots, cattle) must take a YQCA course every year. If you did not take it in person with Hannah, you must take it online at: <https://yqcaprogram.org/>. Certificates are due to the office or emailed to Hannah by July 15th.



## Poultry Testing

Reminder: Meade County is not scheduled for P-T testing until 2025, per new rules.





## Photography

Those planning to enter photography at the fair can stop by the Extension Office and pick up mounting boards (\$1.00) and photo sleeves (\$0.50). Please remember there are specific rules on how your photos are mounted. Rules can be found in the fair book.



## 4-H Foods and Nutrition Rules

Last year, the Kansas State Fair implemented a new food safety rule for frostings and fillings. This rule is now included in the Meade County Fair Book. For food safety purposes, any entries with frosting/filling must calculate the amount of sugar in the frosting/filling recipe only. Calculation must be attached to entry, or the placing will be lowered one ribbon when judged. Frostings/Fillings need to contain more than 65% sugar for safety.

Examples on how to calculate this percentage are included in the publication located at:

[https://bookstore.ksre.ksu.edu/pubs/food-safety-of-frostings-and-fillings\\_MF3544.pdf](https://bookstore.ksre.ksu.edu/pubs/food-safety-of-frostings-and-fillings_MF3544.pdf)

## New Project Names

ICYMI (In case you missed it) - Kansas 4-H updated some of the project names this 4-H year. The fair book reflects those name changes. For example, Clothing Buymanship is now Shopping in Style. All project names can be found on the Kansas 4-H website under projects.



## Cake & Pie Auction

Reminder! Youth need to be enrolled in Foods and also have an item judged in foods to be able to participate in the pie and cake auction at the fair! Make sure to enter your food item AND "Foods Auction" as fair entries!



**FAIR SEASON**  
*is the*  
**BEST SEASON**



# STATE FAIR INFO

## 2024 State Livestock Nomination Information

Please visit [www.meade.k-state.edu/4-h/fair/fair.html](http://www.meade.k-state.edu/4-h/fair/fair.html) to find links for the Declaration Form, the Online Nomination System (ShoWorks), and the YQCA website.

All Nomination Information: <https://www.asi.k-state.edu/extension/youth-programs/nominated-livestock//>

### IMPORTANT!

Need an animal tagged for state fair? Make sure to contact Hannah ASAP to schedule a time! Extension Agents must be present when animals are tagged with EID tags. Small livestock nominations must be postmarked by June 15th, but Hannah will not be available to tag your animals after June 7th because of camp.

## GRAND DRIVE & KJLS IMPORTANT DATES

<b>April 20</b>	<b>Last Day to Order Beef DNA Envelopes</b>
<b>May 1</b>	<b>Market Beef Nominations Due Online &amp; DNA Postmarked</b>
<b>June 5</b>	<b>Last Day to Order Small Livestock DNA Envelopes</b>
<b>June 15</b>	<b>Small Livestock Nominations Due Online &amp; DNA Postmarked</b> <b>-Market Swine, Commercial Breeding Gilt</b> <b>-Market Lamb, Commercial Breeding Ewe</b> <b>-ALL Meat Goat</b> <b>(Market &amp; Breeding)</b>
	<b>Commercial Heifer Nominations Due Online &amp; DNA Postmarked</b>
	<b>Registered Breeding Heifer Papers in Exhibitor's Name</b>
	<b>Registered Breeding Gilt Papers in Exhibitor's Name</b>
<b>July 1</b>	<b>Registered Breeding Ewe Papers in Exhibitor's Name</b>
<b>July 15</b>	<b>Kansas State Fair Grand Drive Entry Deadline</b>
<b>July 25</b>	<b>Kansas State Fair Grand Drive Late Entry Deadline</b>
<b>August 15</b>	<b>KJLS Entry Deadline</b>
<b>August 25</b>	<b>KJLS Late Entry Deadline</b>
<b>Sept. 6 - 8</b>	<b>Kansas State Fair Grand Drive</b>
<b>Sept. 27 - 29</b>	<b>KJLS</b>

\*All market animals must be nominated to be eligible for either show, regardless of breed or gender.

\*\*All commercial breeding females must be nominated to be eligible for either show.

\*\*\*Registered breeding females must be in the exhibitor's name by the appropriate date to be eligible for either show. Refer to show rules for details.

\*\*\*\*All meat goats, including market, commercial breeding does, and registered breeding does must be nominated to be eligible for either show.

# OTHER NEWS

## Blue & Gold Update

We raised \$2070 for 4-H Council from selling Blue & Gold this spring! Great work! Can we beat it next year?

## Wildhorse Camp

We have 16 campers going to Wildhorse Camp! Our counselors are Walker and Ashton!

## Summer Intern

We are excited to be part of Kansas 4-H's Summer Engagement Grant this year! Through this grant, we were able to hire Jateice Vieux as our summer intern. She will be providing programming at summer school, our local libraries, and at the Extension Office this summer. Stay tuned for some awesome programs to be announced soon!!

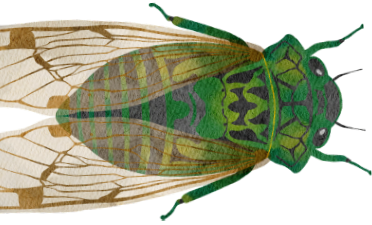
## 4-H Ambassadors Meeting

Our next 4-H Ambassadors meeting is June 24th at 6:30pm. Make sure to text Dixie and Hannah if you cannot make it.

## 4-H Council Meeting

The next 4-H Council meeting will be before Fair Set Up on July 20th at 4:30pm.





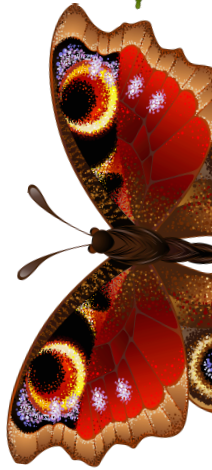
**K-STATE** |   
 Research and Extension

**JUNE 25**  
**9AM-12PM**

# Buggin' Out!

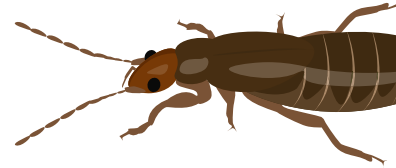


## **4-H ENTOMOLOGY DAY CAMP**



**AT MEADE CITY PARK**

**REGISTER BY JUNE 21ST**



**OPEN TO ALL YOUTH AGES 7-12**

**LEARN ABOUT INSECTS**

**BUG COLLECTING**

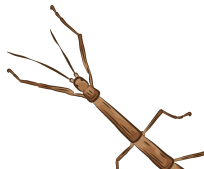
**INSECT PINNING**

**PLUS GAMES & SNACKS**



K-State Research and Extension is committed to providing equal opportunity for participation in all programs, services and activities. Program information may be available in languages other than English. Reasonable accommodations for persons with disabilities, including alternative means for communication (e.g., Braille, large print, audio tape, and American Sign Language) may be requested by contacting Hannah Eakes by May 30 at 620-873-8790 or hannaheakes@ksu.edu. Requests received after this date will be honored when it is feasible to do so. Language access services, such as interpretation or translation of vital information will be provided free of charge to limited English proficient individuals upon request.

**Kansas State University Agricultural Experiment Station and Cooperative Extension Service**  
 K-State Research and Extension is an equal opportunity provider and employer.







# 4-H FISHING DAY CAMP



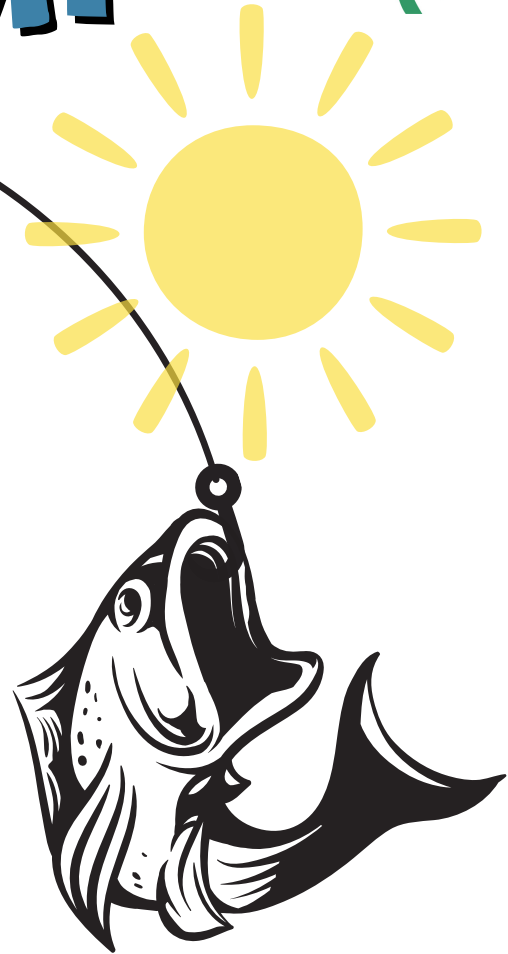
Open to all youth  
ages 7-12

Free to Attend\*

Register by June 17th



\*Adults must have a  
vehicle permit if staying  
with their child



**JUNE 21, 2024**  
**8AM-11AM**

**K-STATE** |   
Research and Extension

K-State Research and Extension is committed to providing equal opportunity for participation in all programs, services and activities. Program information may be available in languages other than English. Reasonable accommodations for persons with disabilities, including alternative means for communication (e.g., Braille, large print, audio tape, and American Sign Language) may be requested by contacting Hannah Eakes by June 3 at 620-873-8790 or hannaheakes@ksu.edu. Requests received after this date will be honored when it is feasible to do so. Language access services, such as interpretation or translation of vital information will be provided free of charge to limited English proficient individuals upon request.

Kansas State University Agricultural Experiment Station and Cooperative Extension Service  
K-State Research and Extension is an equal opportunity provider and employer.

# JUNE

Sun	Mon	Tue	Wed	Thu	Fri	Sat
						1
June 24th will begin Wadona's first full week in the office!						
2	3	4	5	6	7	8
9 Record Book Party 2pm	10 Camp Counselor Training	11-12 Wild Horse 4 - H Camp		13	14	15 Small Livestock Nomination Deadline
16	17	18	19	20	21 Fishing Day Camp	22
23	24 Ambassador Mtg	25 Entomology Day Camp	26	27 Wadona's Welcome Reception	28	29
30	31					

## MONTHLY CLUB MEETINGS

Club	Date	Time	Location
4-Leaf Clover	---	---	No June Meeting
Town and Country	23rd	4:00pm	Millers' Farm, 16133 E Road
3 C's	4th	7:00pm	Fowler Grade School
Plains Livewires	TBD	TBD	TBD



# YEAR IN A GLANCE:

## IMPORTANT DATES FOR 2024!



### June

**5-7:** Discovery Days

**9:** Record Book Party

**10:** Wild Horse Counselor Training

**10:** Wadona's First Day (training in Garden City)

**11-13:** Wild Horse 4-H Camp

**15:** Small Livestock State Nominations Due, Commercial Heifer Nominations Due

**21:** Fishing Day Camp at Meade State Park

**24-28:** Wadona's first week in the office

**25:** Entomology Day Camp at Meade City Park

**27:** Welcome Reception for Wadona at Extension Office

### July

**1:** Pre-entry opens for all fair exhibits (includes 4-H, Animals, & Open Class)

**2:** Day Camp

**15:** Last day to enroll ALL exhibits, Stall Reservations due, Auction Eligibility forms due

**16:** Sewing & Textile Design/Shopping in Style (Style Revue) Judging

**20:** Archery, Air Rifle, BB, Fair Set Up (REQUIRED for premium money)

**21:** Public Style Revue and Talent Show

**22-26:** Meade County Fair!!

**27:** Fair Clean Up (REQUIRED for premium money)

### August

**1:** Entry Deadline for Livestock Sweepstakes

**10:** State 4-H Horticulture Judging Contest

**12:** 4-H Wheat Expo in Manhattan

**17-18:** Livestock Sweepstakes, Manhattan

### September

**6-15:** Kansas State Fair, Hutchinson

**21:** State Archery Match, Wakarusa

### October

**1:** New 4-H Year Begins, 4-H Online Enrollment Opens

**6-12:** National 4-H Week!!

**12-13:** 48 Hours of 4-H

**12-13:** State Shotgun Matches, Sedgwick/Augusta

### November

**23-24:** Kansas Youth Leadership Forum, Rock Springs 4-H Center

