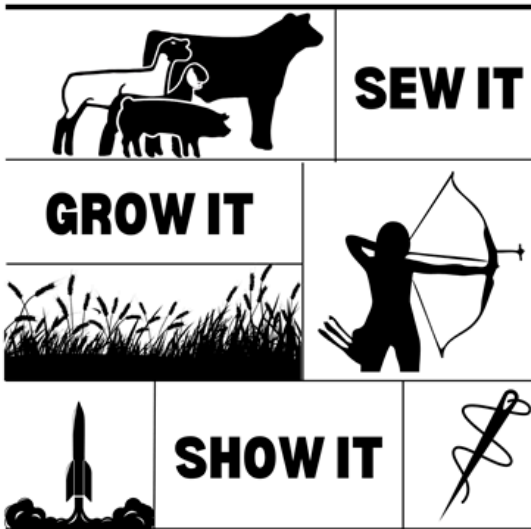




4-H NEWSLETTER



What's In This Month's Issue?

- Upcoming Events
- Fair Information
- Sale Packets
- State Fair Info
- Shooting Sports
- Calendar
- Year in a Glance



MEADE COUNTY FAIR 2024

It's fair month! The Meade County Fair will be here before we know it. We hope you are excited for another awesome fair!!

Fair entry is now open at <https://faireentry.com/Fair/SignIn/20560> or by scanning the QR code below. Don't wait to get your entries in! Enter anything that you might want to exhibit at the fair, even if you might decide later to scratch. All of the fair deadlines are listed on page 3.

Let us know if you have any questions or need help!!



Contact Us

Meade County Extension Office:
Address: 407 E Rainbelt
PO Box 369
Meade, KS 67864
Phone: (620) 873-8790

Hannah: hannaheakes@ksu.edu
(620) 629-5972

Wadona: wlhenson@ksu.edu
(620) 518-6653

Leslie: lesliedenise@ksu.edu

Website
www.meade.ksu.edu

Social Media
Facebook:/MeadeCoExtension

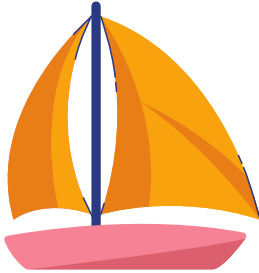


UPCOMING EVENTS

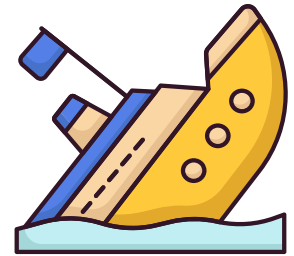
Summer Adventures with Jatiece Vieux

Will it Sink or Float? Build a boat to test it out!

Choose from 3 dates and locations to attend this **free** program:



Fowler Public Library: July 5th @ 1pm
Plains Public Library: July 12th @ 1pm
Meade Public Library: July 16th @ 10am
Register at <https://bit.ly/4eh1Pmt>



Reading Makes Cents: A Financial Literacy Program for Kids

Learn basic concepts relating to money and financial planning! This is geared toward kids going into 3rd-6th grades. Attend one or all sessions! Register at <https://bit.ly/3yUclQm>

Where: Fowler Public Library from 1pm-2:30pm

When: July 11, July 18, July 25, August 1

Cost: **Free!**

DON'T MISS OUT!

FAIR INFO

IMPORTANT

DUE JULY 15

- Auction Eligibility Forms
- YQCA Certificate
- Livestock Insurance (optional)
- Stall reservations
- FAIR ENTRIES
- Final Deadline to pick up Sale packets if participating in the auction

Visit our website

All fair documents can be found on our website:
<https://www.mead.e.k-state.edu/4-h/fair/fair.html>

Don't forget to pick up a fair book!



Fair Entry



<https://fairentry.com/Fair/SignIn/20560>

Fair Entry registration opens on Monday, **July 1st** and ends on Monday, **July 15th!**

Families will use their 4-H Online Sign-In and password for this process. Make sure to enroll ALL kids before submitting.



Fair Set up & Clean up

Set Up: Saturday, July 20, 5:30pm
Clean Up: Saturday July 27, 10:00am

Just as last year, there is a scheduled time for setting up and cleaning up the fairgrounds. **Both Fair Set Up and Clean Up are required for 4-Hers in order to get your premium money.** If you are unable to attend either/both events, please make arrangements with the office beforehand. We understand people have other commitments before and after fair, but everyone plays a part! Please see the family assignments on the next page.

Fair Set-up: Saturday, July 20th, at 5:30 pm

It is a requirement for all 4-H youth to participate in Fair Set-up and Clean-up. Please see below for your family's duties. Make sure to check in with the Extension Agents so we know you helped. If you finish your area, please pitch in and help others! The faster we clean, the faster we get to eat supper!

Amerin	Building A
Bahr	Grounds
Bussen	Building B
Carpenter	Building A
Conway	Building B
Dizmang	Grounds
Fieser	Swine Barn
Fisher	Building A
Haskell	Building A
Hardaway	Bucket Calf Pens, Indoor Arena
Harjo	Indoor Arena
Harlow	Swine Barn
Harris	Bucket Calf Pens, Indoor Arena
Hawley	Building B
Henson	Building B
Ingram	Harris Arena Bathrooms, Indoor Arena
Koons	Sheep/Goat Barn
Langhofer	Harris Arena Bathrooms, Building B
Law	Building A
Leak	Building B
Lynn	Building B
Martin	Outdoor Arena and Bathrooms
McDowell	Building B
McNemer	Sheep & Goat Barn
Mendoza	Grounds
Miller	Outdoor Arena & Bathrooms
Neel	Building A
Rojas	Outdoor Arena and Bathrooms
Roberts	Building B
Spangelo	Building B
Sparks	Grounds
Sutterfield	Building B
Thornton	Building A
Turner	Swine Barn
Urquidez	Building B
Vieux	Building A
Williams	Building B
Woods	Indoor Arena
Yohn	Sheep & Goat Barn

Build Bucket Calf Pens	Set up pens as described on provided map that night. Please bring hammer to pound posts & pliers. Scrap wire can be found to wire pens to fence.
Building A	Sweep floors, set up tables and chairs as necessary. Please bring cleaning supplies to clean tables.
Building B	Sweep floors, set up exhibit areas (4-H and Open Class) Please bring cleaning supplies to dust, shine glass, and clean bathrooms.
Harris Arena Bathrooms	Clean toilets, showers, and sink. Sweep floors and cement outside bathrooms. Please bring cleaning supplies.
Grounds (Clean up Trash)	Pick up any trash from the south fence to north of the blacktop road. Bring trash bags to carry with you.
Outdoor Arena	Clean bathrooms. Bring any cleaning supplies necessary. Pick up trash at outdoor arena.
Sheep & Goat Barn	Make sure all pens are working and are weed free. Bring brooms to sweep out pens. Make sure trash is picked up around the outside of the barn.
Swine Barn	Make sure all pens have latches and are debris free. Clean drains out, also make sure drains at the south end of barns are cleaned out to prevent clogs. Hoses hung. Put up sun screens.
Indoor Arena	Set up show ring, move bleachers, move trash cans as needed.

MORE FAIR!

Sale Packets

Sale Packets are at the office ready to be picked up. Each 4-H family participating in the food or livestock auction will need to take 3 packets to local businesses. This year we are going to have a sign up sheet for families to select which businesses you would like to take the packets to when you pick them up from the office. **Please pick up your family's sale packets by July 10th. After this deadline, any remaining packets will be assigned to families who have not come in to pick them up yet.**

An RSVP card for the Buyers BBQ will be paperclipped to each sale packet for you to have the business fill out. Once it is filled out, please bring it back to the office or text a picture of it to Hannah at 620-629-5972 by July 19th. This helps us get an idea of who will attend the BBQ and helps make sure we are covering our local businesses. The more businesses you reach and the more people that come to the auction, the better the outcome is for you! Please see the next page for some suggestions when visiting businesses.

(See more Sale Packet info below)





Delivering Sale Packets

Taking a Sale Packet to businesses in the area is a personal invitation to our Annual Fair BBQ and encourages potential buyers to come to our Cake & Pie and Livestock Sale. When visiting a business, this is an excellent time to practice your conversation skills and use what is called an “elevator pitch.” An elevator pitch is basically a really short summary about whatever it is you are involved with or supporting. In this case, your elevator pitch would be about your 4-H project(s) that you are bringing to the Meade County Fair.

When you are delivering your sale packet, here are some tips to help your conversation. Taking a moment to talk to the person you are delivering the packet to rather than just dropping it off will create a personal connection and might improve the chances of them coming to support!

- Introduce yourself if you don't already know them! Start with telling the person your name, what 4-H club you are in, and what projects you participate in. You could also bring some pictures of your projects.
- Tell them what is in the packet. It includes a brochure about the auction, an invitation to the Fair BBQ, and 2 FREE tickets to the BBQ.
- Why should they come to the Fair BBQ? The BBQ is a meal for the community to gather at the end of the fair, right before our Cake & Pie and Livestock Sale. If they are interested, they can stay after the meal and support our local 4-Hers by participating in the auction.
- Ask them to fill out the RSVP card while you are there so you can bring it back to the office.
- Thank them for their time!

Consider taking a note with you in case the person you are trying to deliver the packet to is not in the office when you stop by. This way they know who left it and you can follow up with a phone call or another visit later to fill out the RSVP card.

As mentioned on the previous page, you will sign up for which businesses you are taking your packets to when you pick them up at the office. Please return the RSVP card to the office or send a picture of it to Hannah by July 19th.

SHOOTING SPORTS & STALL DECORATING CONTEST

Air Rifle and BB Practices

July 2nd

July 7th

July 10th

July 14th

July 18th

July 19th

All at 7:30pm in B Building

Make sure to watch for emails from
Karen for any changes.

Archery Practice

July 14th-19th at 6:00pm.

Rockie will be available to adjust bows these days only. If youth need their bow adjusted, you must attend one or two of these practices. He will not be available to adjust bows on the day of the archery shoot. 4-Hers should attend at least two practices, especially those new to the project.

Stall Decorating Contest

We will be having a stall decorating contest on livestock stalls using the fair theme – Sew It, Grow It, Show It. The sponsor for this contest will be giving a cash prize to the winner!

Decorations must be kept on the 4-Her's own stall, and must be respectful to other 4-Hers and livestock in the barn. Get creative and make your stall a fun sight to see!



REMINDERS

AUCTION ELIGIBILITY FORMS: JULY 15

All youth wishing to sell an item in the food or livestock auction must fill out the Auction Eligibility Form and turn it in to the office by July 15th at 4:00pm. Your club leader must sign the form, so don't wait until the last minute! Download the form from our website: www.meade.k-state.edu/4-h/fair/fair.html or stop by the office.

Livestock Insurance & Stall Reservations

Livestock insurance can be purchased for animals that are shown at the county fair for \$7/head. If you have animals down but we do not receive payment by July 15th, those animals will not be covered. The insurance covers the animal at market value once it leaves your property until the end of the fair on Friday. Download the form from our website: www.meade.k-state.edu/4-h/fair/fair.html or come in to the office to grab one!

Stall reservations are completed on this same page.

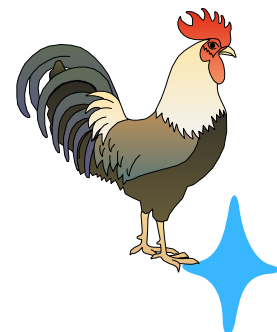
YQCA

All youth showing livestock (sheep, goats, hots, cattle) must take a YQCA course every year. If you did not take it in person with Hannah, you must take it online at: <https://yqcaprogram.org/>. Certificates are due to the office or emailed to Hannah by July 15th.



Poultry Testing

Reminder: Meade County is not scheduled for P-T testing until 2025, per new rules.





Photography



Those planning to enter photography at the fair can stop by the Extension Office and pick up mounting boards (\$1.00) and photo sleeves (\$0.50). Please remember there are specific rules on how your photos are mounted. Rules can be found in the fair book.



4-H Foods and Nutrition Rules

Last year, the Kansas State Fair implemented a new food safety rule for frostings and fillings. This rule is now included in the Meade County Fair Book. For food safety purposes, any entries with frosting/filling must calculate the amount of sugar in the frosting/filling recipe only. Calculation must be attached to entry, or the placing will be lowered one ribbon when judged. Frostings/Fillings need to contain more than 65% sugar for safety.

Examples on how to calculate this percentage are included in the publication located at:

https://bookstore.ksre.ksu.edu/pubs/food-safety-of-frostings-and-fillings_MF3544.pdf

New Project Names

ICYMI (In case you missed it) - Kansas 4-H updated some of the project names this 4-H year. The fair book reflects those name changes. For example, Clothing Buymanship is now Shopping in Style. All project names can be found on the Kansas 4-H website under projects.

Cake & Pie Auction



Reminder! Youth need to be enrolled in Foods and also have an item judged in foods to be able to participate in the pie and cake auction at the fair! Make sure to enter your food item AND "Foods Auction" as fair entries!



FAIR SEASON
is the
BEST SEASON



STATE FAIR INFO

GRAND DRIVE & KJLS IMPORTANT DATES

April 20	Last Day to Order Beef DNA Envelopes
May 1	Market Beef Nominations Due Online & DNA Postmarked
June 5	Last Day to Order Small Livestock DNA Envelopes
June 15	Small Livestock Nominations Due Online & DNA Postmarked -Market Swine, Commercial Breeding Gilt -Market Lamb, Commercial Breeding Ewe -ALL Meat Goat (Market & Breeding)
	Commercial Heifer Nominations Due Online & DNA Postmarked
	Registered Breeding Heifer Papers in Exhibitor's Name
	Registered Breeding Gilt Papers in Exhibitor's Name
July 1	Registered Breeding Ewe Papers in Exhibitor's Name
July 15	Kansas State Fair Grand Drive Entry Deadline
July 25	Kansas State Fair Grand Drive Late Entry Deadline
August 15	KJLS Entry Deadline
August 25	KJLS Late Entry Deadline
Sept. 6 - 8	Kansas State Fair Grand Drive
Sept. 27 - 29	KJLS

*All market animals must be nominated to be eligible for either show, regardless of breed or gender.

**All commercial breeding females must be nominated to be eligible for either show.

***Registered breeding females must be in the exhibitor's name by the appropriate date to be eligible for either show. Refer to show rules for details.

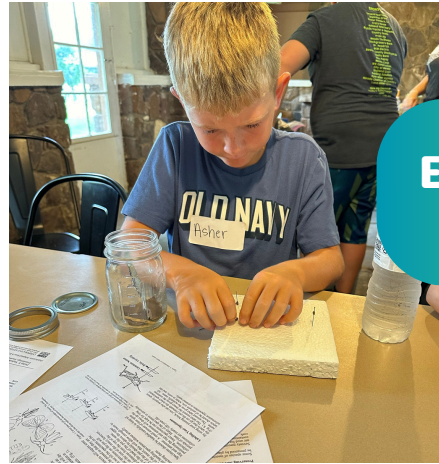
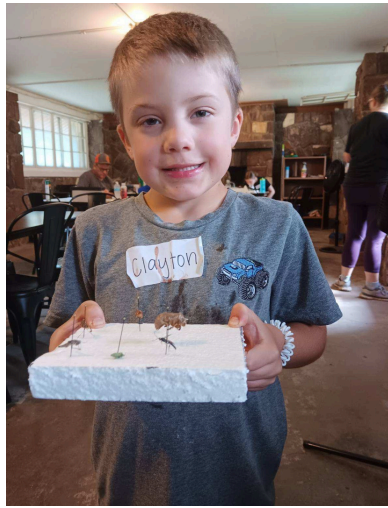
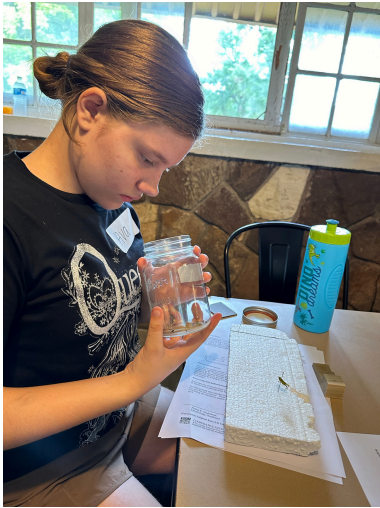
****All meat goats, including market, commercial breeding does, and registered breeding does must be nominated to be eligible for either show.

<http://bit.ly/ksunominations>

<https://www.kansasstatefair.com/p/competitions/grand-drive-25th-anniversary>

<http://www.kjls.net/>

SUMMER FUN



Entomology Camp

Fishing Camp



Wildhorse Camp



SUMMER FUN



Chopped
Cooking
Challenge



Photography



JULY

Sun	Mon	Tue	Wed	Thu	Fri	Sat
	1 3 C's Meeting	2	3 Needleworking with Jateice 1pm	4 Office Closed July 4th at the Park! 4-Leaf Clover Mtg	5 Sink or Float, Fowler Library: 1:00 pm (Jateice)	6
7	8	9	10	11 Reading Makes Cents Fowler Library (Jateice)	12 Sink or Float, Plains Library 1:00 pm (Jateice)	13
14	15 Fair Deadlines entries, stall reservations, Auction Eligibility, YQCA	16 Style Revue Judging 9am Sink or Float, Fowler Library: 1:00 pm (Jateice)	17	18 Reading Makes Cents Fowler Library (Jateice)	19	20 Fair Set up Archery Air Rifle/BB
21 Style Revue 5pm	22	23-24 Meade County Fair		25 Reading Makes Cents Fowler Library (Jateice)	26	27 Fair Clean Up
28	29	30 After Fair Meeting 7:30pm	31	1 Reading Makes Cents Fowler Library (Jateice)		

MONTHLY CLUB MEETINGS

Club	Date	Time	Location
4-Leaf Clover	4th	---	Meade City Park
Town and Country	TBD	TBD	TBD
3 C's	1st	7:00pm	Fowler Grade School
Plains Livewires	TBD	TBD	TBD



YEAR IN A GLANCE:

IMPORTANT DATES FOR 2024!

July

1: Pre-entry opens for all fair exhibits (includes 4-H, Animals, & Open Class)

2: Day Camp!

15: Last day to enroll ALL exhibits, Stall Reservations due, Auction Eligibility forms due. YQCA forms due

16: Sewing & Textile Design/Shopping in Style (Style Revue) Judging

20: Archery, Air Rifle, BB, Fair Set Up (REQUIRED for premium money)

21: Public Style Revue and Talent Show

22-26: Meade County Fair!!

27: Fair Clean Up (REQUIRED for premium money)

August

1: Entry Deadline for Livestock Sweepstakes

10: State 4-H Horticulture Judging Contest

12: 4-H Wheat Expo in Manhattan

17-18: Livestock Sweepstakes, Manhattan

September

6-15: Kansas State Fair, Hutchinson

21: State Archery Match, Wakarusa

October

1: New 4-H Year Begins, 4-H Online Enrollment Opens

6-12: National 4-H Week!!

12-13: 48 Hours of 4-H

12-13: State Shotgun Matches, Sedgwick/Augusta

November

23-24: Kansas Youth Leadership Forum, Rock Springs 4-H Center

