



December

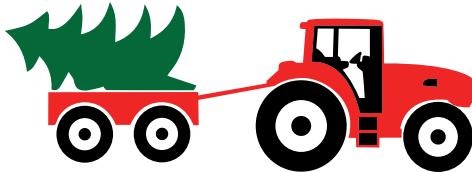


4-H NEWSLETTER

Achievement Banquet and Christmasing in Plains

Sunday, December 8th

PLEASE RSVP FOR THE PARADE
AND/OR BANQUET



3pm – Meet in Plains (on W Wildcat one block north of the Methodist Church) & line up for parade

4pm – Parade – Theme: Wild West Christmas

5pm – 4-H Council Meeting at Plains Methodist Church

6pm – Achievement Banquet at Plains Methodist Church - ALL 4-H members and families are welcome, even if you did not complete a record book.

What's In This Month's Issue?

- Achievement Banquet
- Christmasing in Plains
- New 4-H Year
- Upcoming Events
- Holiday Office Hours
- Calendars

Contact Us

Meade County Extension Office:

Address: 407 E Rainbelt
PO Box 369
Meade, KS 67864
Phone: (620) 873-8790

Hannah: hannaheakes@ksu.edu
(620) 629-5972

Wadona: wlhenson@ksu.edu
(620) 518-6653

Leslie: lesliedenise@ksu.edu

Website

www.meade.ksu.edu



Social Media

Facebook: /MeadeCoExtension





NEW 4-H YEAR



Project Leaders Needed!



Volunteers and Senior level 4-Hers: Are you knowledgeable and passionate about one of the 4-H projects such as woodworking, welding, or rockets? We are always looking for project leaders to help teach our 4-Hers. Senior level 4-Hers (ages 14+) can serve as Junior Project Leaders. This is a great leadership opportunity and looks great on college and job applications.

If you would be willing to help, talk to one of the agents!



VOLUNTEERS

4-H Volunteers, make sure to enroll yourself in 4-H Online too. Anyone who plans to chaperone/transport youth to events or lead project or club meetings must be a registered volunteer with a current background check. It's free and should only take about 10 minutes to enroll!



NEWSLETTERS

The 4-H Newsletter is posted to our website and the link is sent out through 4-H Online each month. The Newsletter contains A LOT of information, but that is because it is important and we try to compile everything into one resource for you.

Please make sure to read the newsletter each month. If you would like the Newsletter mailed to you for the 24-25 4-H year, please fill out this form:

https://kstate.qualtrics.com/jfe/form/SV_9Nz3k4pbTKxJJzg

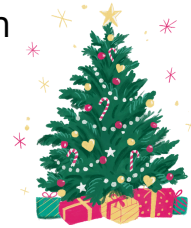
UPCOMING EVENTS

Meade County 4-H Cloverbuds

The next Cloverbuds meetings are December 10th in Plains and December 17th in Meade.

Open to youth ages 5-6 by January 1, 2025.

It's not too late to sign up! Join us for some holiday/winter activities!



County Club Day

February 19th, 2025: Save the Date. Registration will be through an online qualtrics form again. The link will be published in the January newsletter.

Club Day Categories & Events

Parliamentary Procedure:

- Gavel Game
- Model Meeting

Presentations:

- Show and Tell
- Jr. Project Talk
- Demonstration/Illustrated Talk
- Digital Presentation
- Reading
- Public Speaking
- Extemporaneous Speaking

Music:

- Vocal: Solo, Ensemble, Chorus
- Instrument: Solo, Ensemble, Chorus

Talent:

- One Act Play
- Skit
- Novelty
- Vocal Performance
- Dance

UPCOMING EVENTS

'tis the season

Our office will be closed for the Christmas and New Year holidays from December 23rd to January 3rd.

We will open again on Monday, January 6th at 8:00am.



2025 Junior Swine Producer Day

Date: Saturday, March 1

Cost: \$20/person

Registration Deadline: February 5

Location: Stanley Stout Center, Manhattan, KS

([Flyer](#) Here)

2025 Junior Meat Goat Producer Day

Date: Saturday, March 22

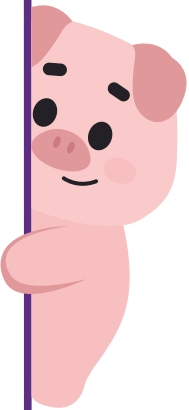
Cost: \$20/person

Registration Deadline: February 26

Location: Stanley Stout Center, Manhattan, KS

*There will be an optional tour of the KSU Sheep & Meat Goat Center on the Friday night prior to junior meat goat producer day, as well as after the program concludes on Saturday.

([Flyer](#) Here)



Saturday, January 4, 2025, 4:00 PM

K-STATE

Research and Extension



Kansas 4-H Day with K-State Women's Basketball

Opponent: Texas Tech Red Raiders

\$25: Ticket, Voucher (\$10 Concessions), & Shirt
\$15: Ticket & Voucher (\$10 Concessions)



How to Get Tickets?

- ✓ Register! Use the QR Code or the link below!
- ✓ Pick up ticket packages - Location TBA closer to event. (1/4/2024) 2:30pm - 3:30pm
- ✓ Doors open for the general public (1/04/2024, 3:00pm)
- ✓ Tip-off! (1/04/24, 4:00 pm)



Kansas State University Agricultural Experiment Station and Cooperative Extension Service
K-State Research and Extension is an equal opportunity provider and employer. Resource: <https://www.apa.org/topics/resilience>



Online registration for this event will be due December 13, 2024. No paper registrations will be accepted. To register, go to:

<https://tinyurl.com/4HDaywiththeCats2025>

SAVE THE DATE

JANUARY 11TH, 2025

10AM-12:30PM

4-H LEADERSHIP DAY:

WITH DUSTIN GALYON

CHECK OUT:

**[HTTPS://DUSTINGALYON.COM/](https://dustingalyon.com/)
TO LEARN ABOUT OUR SPEAKER!**

EVENT LOCATION:

GRAY COUNTY FAIRGROUNDS, CIMARRON, KS

**SPONSORED BY GRAY COUNTY 4-H AND
WALNUT CREEK DISTRICT 4-H**

K-STATE RESEARCH AND EXTENSION IS COMMITTED TO PROVIDED EQUAL OPPORUNITY FOR PARTICIPATION IN ALL PROGRAMS, SERVICES, AND ACTIVITIES. REASONABLE ACCOMMODATIONS FOR PERSONS WITH DISABILITIES MAY BE REQUESTED.

Save the date for 4-H Leadership Day in Cimarron for 6th grade and up! Flyer and registration will be sent out at a later date. Dustin Galyon is the speaker that was at KYLF, and he was AWESOME!!

OLD NEWS



Are you enthusiastic about 4-H? Do you enjoy working with youth and adults? Consider volunteering as a club leader for our Four Leaf Clovers 4-H Club! Club Leaders are essential to the success of our local clubs. If you'd like to learn more about what a club leader does, you can read the position description here: <https://www.kansas4-h.org/volunteers/docs/Club%20Leader%20Position%20Description%20pdf.pdf>

Contact the office if you are interested in this volunteer opportunity.

Volunteers
needed

Regional Record Book Screening

If you would like your project record book to compete at the state level, the next step is Regional Screenings. Please come pick your record book up from the office so that you can work on improving it before it is taken to the regional level. These will be due back to the office by **December 18th**.

Also, stay tuned for a Zbooks training coming soon to help with record books this year!

4-H STORE

We are starting something new this year at the Extension Office called the "4-H Store." We are offering 4-Hers the opportunity to earn points by doing things like attending events, helping the agents, and promoting 4-H. Think of it like Dave & Busters or Main Event where you can redeem your points for prizes!

We have a document that outlines the points, called Clover Coins, and prizes on our website [HERE](#). We will update this document as new opportunities for Clover Coins arise. We will keep track of 4-Hers points, but you should also keep track of them yourself! Essentially this is just a fun opportunity for our hard working 4-H members to have a tangible and fun reward for showing up to things!

CLUB CORNER

Welcome to the Club Corner, where we will share what the 4-H Clubs are up to! Each month, we will ask the club leaders and club reporters to share any fun news or upcoming events that your clubs have. Have something you want featured next month? Email us!





On November 26th, 3 C's members helped serve and clean up the Fowler Grade School Family Thanksgiving Meal. Their help was greatly appreciated!





December

Sun	Mon	Tue	Wed	Thu	Fri	Sat
1	2 4-Leaf Clover Meeting	3	4	5	6	7
8 3 C's Meeting Plains Parade & Achievement Banquet	9	10 Plains Cloverbuds	11	12	13 Deadline: Register for 4-H Day, K-State Womens' Basketball	14
15 T&C Meeting Plains Livewires Meeting	16	17 Meade Cloverbuds	18 Regional Record Books Due	19	20	21 
22 Extension	23 Office	24 Closed	25  Christmas!	26	27	28
29	30	31				

MONTHLY CLUB MEETINGS

Club	Date	Time	Location
4-Leaf Clover	2nd	6:30pm	Extension Office
Town and Country	15th	4pm, 5pm	Thriftway, B Bldg
3 C's	8th	3:00 pm	Fowler Grade School
Plains Livewires	15th	3:00pm	Plains Methodist Church



YEAR IN A GLANCE:

IMPORTANT DATES FOR 2024-2025!

December

- 8:** Achievement Banquet & Christmasing in Plains
- 10:** Plains Cloverbuds Meeting
- 17:** Meade Cloverbuds Meeting
- 18:** Record Books due back to Office
- 23-31:** Extension Office Closed

January

- 1-3:** Office Closed
- 7:** Plains Cloverbuds
- 11:** 4-H Leadership Day
- 14:** Meade Cloverbuds
- 20:** Extension Office Closed

February

- 4:** Plains Cloverbuds
- 11:** Meade Cloverbuds
- 16-17:** Citizenship in Action
- 19:** County Club Day

March

- 1:** Regional Club Day (tentative)
- 4:** Plains Cloverbuds
- 11:** Meade Cloverbuds
- 12:** Beef Weigh in (tentative)
- 18:** YQCA Training (tentative)
- TBD:** Blue & Gold Orders Due

April

- 8:** Plains Cloverbuds
- 15:** Meade Cloverbuds
- 27:** Small Animal Weigh in (tentative)

May

June

- 4-6:** Discovery Days, Manhattan
- 16:** Wildhorse Camp Counselor Training
- 17-19:** Wildhorse Camp

July

- 21-25:** Meade County Fair

