

4-H NEWSLETTER

ENROLL IN 4-H ONLINE

Don't forget to enroll in 4-H Online! After December 1st, we will move our communications over to the 2024-2025 enrollments. Enrolling before Dec 1 is also an option to check off of auction eligibility.

Make sure to select the "Pay by Check" option when enrolling so that your fees can be covered by 4-H Council.

Projects can be edited until May 1st. If you're not sure which projects you would like to focus on this year, just select any that you think you might participate in.

ENROLL HERE: <https://v2.4honline.com/>



What's In This Month's Issue?

- National 4-H Week
- 4-H Sunday
- Cloverbuds
- Fair Rule Changes
- Upcoming
- Club Corner
- Calendars

Contact Us

Meade County Extension Office:

Address: 407 E Rainbelt
PO Box 369
Meade, KS 67864
Phone: (620) 873-8790

Hannah: hannaheakes@ksu.edu
(620) 629-5972

Wadona: wlhenson@ksu.edu
(620) 518-6653

Leslie: lesliedenise@ksu.edu

Website

www.meade.ksu.edu

Social Media

Facebook: /MeadeCoExtension






NEW 4-H YEAR



Project Leaders Needed!



Volunteers and Senior level 4-Hers: Are you knowledgeable and passionate about one of the 4-H projects such as woodworking, welding, or rockets? We are always looking for project leaders to help teach our 4-Hers. Senior level 4-Hers (ages 14+) can serve as Junior Project Leaders. This is a great leadership opportunity and looks great on college and job applications.

If you would be willing to help, talk to one of the agents!



VOLUNTEERS

4-H Volunteers, make sure to enroll yourself in 4-H Online too. Anyone who plans to chaperone/transport youth to events or lead project or club meetings must be a registered volunteer with a current background check. It's free and should only take about 10 minutes to enroll!



NEWSLETTERS

The 4-H Newsletter is posted to our website and the link is sent out through 4-H Online each month. The Newsletter contains A LOT of information, but that is because it is important and we try to compile everything into one resource for you.

Please make sure to read the newsletter each month. If you would like the Newsletter mailed to you for the 24-25 4-H year, please fill out this form:

https://kstate.qualtrics.com/jfe/form/SV_9Nz3k4pbTKxJJzg



THANKKSGIVING MEALS



Each year we collect food items from our 4-Hers and the 4-H Ambassadors deliver Thanksgiving meals to local families that could use some help! Each club is responsible for one sheet. Contact your club leader to sign up! Thank you for your service and generosity to help families have a delicious Thanksgiving meal.

3 C's club will be providing the vegetables, so 3 C's members do not need to use this sign up sheet.



Please turn all items in to the Extension Office by Wednesday, November 20th.



Stuffing (3 boxes/person)

Dry Gravy Packets (3 packets/person)

Potatoes (10 lbs)

Canned Fruit (2 cans/person)

Pre-baked rolls (1 dozen each)

Frozen Pie



UPCOMING EVENTS

Working^{with} Wadona

When: Tuesday, November 26
10 AM-12 PM

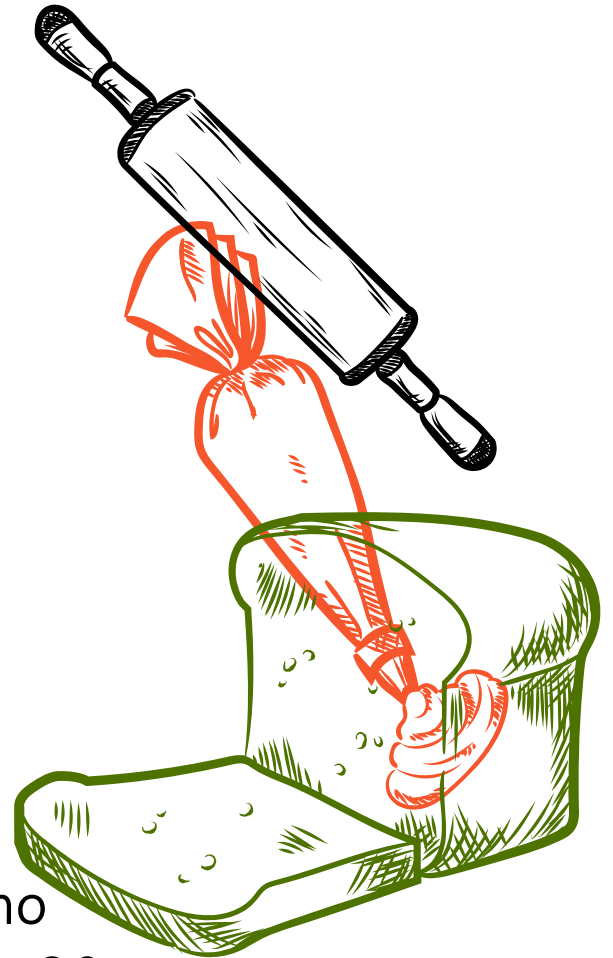
Where: Meade County Extension Office

Who: Any 2024-2025 enrolled 4-H
member 7-18 years of age

What: Work with Wadona and
learn to make

- Pebernodder (Danish
Peppernuts)
- Velveeta Fudge

Register: Online [HERE](#)
or call the office 620-873-8790 no
later than Wednesday, November 20.



Achievement Banquet & Christmasing in Plains

Save the date!! **Sunday, December 8th**, is “Christmasing in Plains.” The parade theme is Wild West Christmas! Achievement Banquet will be the same day. Times will be determined at a later date.



OTHER NEWS



Are you enthusiastic about 4-H? Do you enjoy working with youth and adults? Consider volunteering as a club leader for our Four Leaf Clovers 4-H Club! Club Leaders are essential to the success of our local clubs. If you'd like to learn more about what a club leader does, you can read the position description here: <https://www.kansas4-h.org/volunteers/docs/Club%20Leader%20Position%20Description%20pdf.pdf>

Contact the office if you are interested in this volunteer opportunity.



Regional Record Book Screening

If you would like your project record book to compete at the state level, the next step is Regional Screenings. Please come pick your record book up from the office so that you can work on improving it before it is taken to the regional level. These will be due back to the office by December 18th.

Also, stay tuned for a Zbooks training coming soon to help with record books this year!

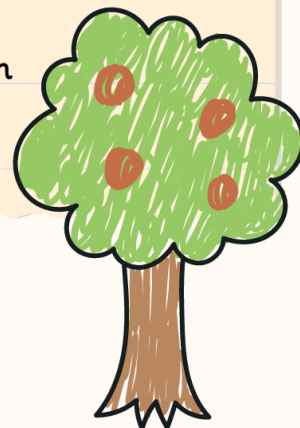
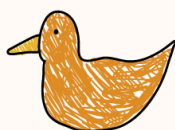
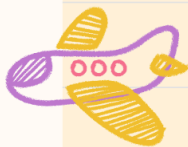
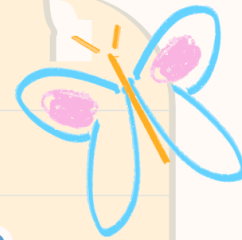
4-H STORE

We are starting something new this year at the Extension Office called the "4-H Store." We are offering 4-Hers the opportunity to earn points by doing things like attending events, helping the agents, and promoting 4-H. Think of it like Dave & Busters or Main Event where you can redeem your points for prizes!

We have a document that outlines the points, called Clover Coins, and prizes on our website [HERE](#). We will update this document as new opportunities for Clover Coins arise. We will keep track of 4-Hers points, but you should also keep track of them yourself! Essentially this is just a fun opportunity for our hard working 4-H members to have a tangible and fun reward for showing up to things!

CLOVERBUDS

Cloverbuds is for youth ages 5-6 years old by January 1st, 2025! It is a fun, non-competitive introduction to 4-H. Wadona and Hannah will be hosting Cloverbuds both in Meade and Plains. Enroll through 4-H Online!



K-STATE
Research and Extension



Meade County 4-H

CLOVERBUDS

3:40pm-4:40pm

PLAINS

November 5
December 10
January 7
February 4
March 4
April 8

MEADE

November 12
December 17
January 14
February 11
March 11
April 15

MORE INFO

Meade County Extension
620-873-8790

NOVEMBER



Sun	Mon	Tue	Wed	Thu	Fri	Sat
					1	2 Officer Training 10-12
3	4 Plains Livewires Meeting 4-Leaf Clover Meeting	5 Plains Cloverbuds	6	7	8	9
10 3 C's Meeting	11 T&C Meeting	12 Meade Cloverbuds	13	14	15	16
17	18	19	20	21	22 KYLf	23
24 KYLf	25	26 Working with Wadona	27 Office Closed	28	29	30

MONTHLY CLUB MEETINGS

Club	Date	Time	Location
4-Leaf Clover	4th	6:30pm	Extension Office
Town and Country	11th	6:30pm	B Bldg @ Fairgrounds
3 C's	10th	3:00 pm	Fowler Grade School
Plains Livewires	4th	6:30pm	Plains Methodist Church



YEAR IN A GLANCE:

IMPORTANT DATES FOR 2024-2025!

November

- 2: Officer Training
- 5: Plains Cloverbuds Meeting
- 12: Meade Cloverbuds Meeting
- 22-24: Kansas Youth Leadership Forum, Rock Springs 4-H Center
- 26: Working with Wadona Program
- 27-29: Office Closed for Thanksgiving

December

- 8: Achievement Banquet & Christmasing in Plains
- 10: Plains Cloverbuds Meeting
- 17: Meade Cloverbuds Meeting
- 23-31: Extension Office Closed

January

- 1-3: Office Closed
- 7: Plains Cloverbuds
- 14: Meade Cloverbuds
- 20: Extension Office Closed

February

- 4: Plains Cloverbuds
- 11: Meade Cloverbuds
- 16-17: Citizenship in Action
- TBD: County Club Day

March

- 1: Regional Club Day (tentative)
- 4: Plains Cloverbuds
- 11: Meade Cloverbuds
- 12: Beef Weigh in (tentative)
- 18: YQCA Training (tentative)
- TBD: Blue & Gold Orders Due

April

- 8: Plains Cloverbuds
- 15: Meade Cloverbuds
- 27: Small Animal Weigh in (tentative)

May

June

- 4-6: Discovery Days, Manhattan
- 16: Wildhorse Camp Counselor Training
- 17-19: Wildhorse Camp

July

- 21-25: Meade County Fair

